



# HALL'S CROFT ACTIVITY SHEET

## Ground Floor



Where can you find this little girl?

- 1. Painted on a box
- 2. Painted on a board in the fireplace
- 3. In a painting called 'A Family Saying Grace'

Look at the table in the painting where you found the girl.

What is the family about to eat?

- 1. pasta
- 2. roast meat
- 3. vegetables

There are several things on display that tell us about children in Shakespeare's time.

Can you list them?

.....

.....

.....

The table setting looks different from one today, doesn't it? Which of the following items **can** you see?

- 1. pewter plate
- 2. fork
- 3. linen table cloth
- 4. knife
- 5. Salts

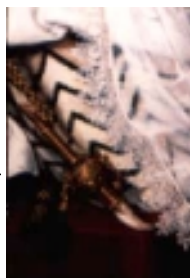
Can you think of anything which you would have on your dinner table (or even on your tea tray) at home that is not in the picture?

What do you think this is?

.....

Where can you see it?

.....



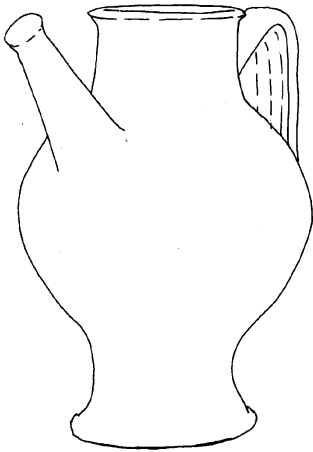
How does it make a noise?

.....

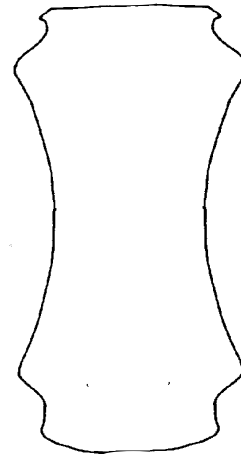
# The Dispensary

*In the 16th and 17th century, pottery jars were used to hold medicines.*

**Syrup jars**  
contained liquids



**Albarellio jars**  
were used for dry ingredients



Dr. John Hall used lots of things which seem strange to us in his cures including:

oil of scorpions  
rosemary flowers  
powder of earthworms

poppy seeds  
oil of bricks  
syrup of mugwort

Look at the jars on display and draw your own designs on the blank jars above for some of these liquids and dry drugs.

What other medical ingredients are hanging up in the room?

.....

What do you think the doctor in the painting is looking at in the glass flask?

1. urine

2. dirty water

3. wine

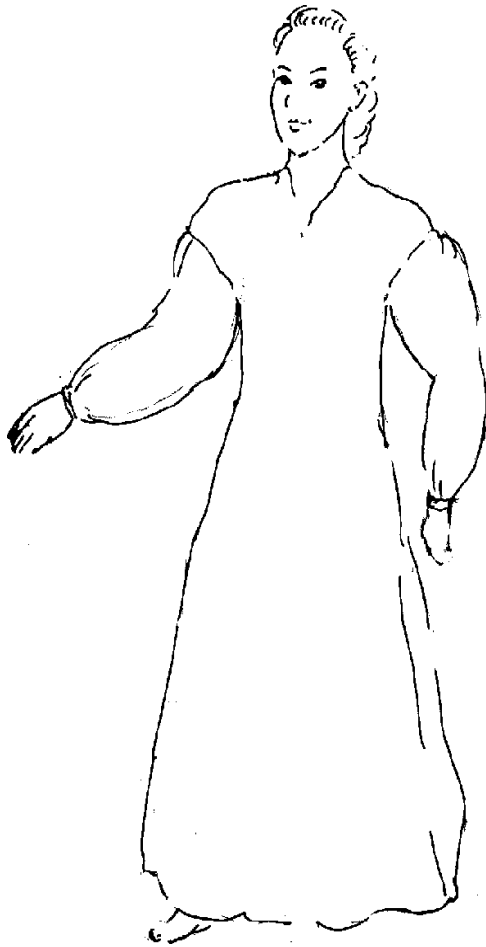


How do you think this helped him to find out what was wrong with his patient?

## The Main Bedchamber

Find the pieces of underwear in the bedchamber and draw them over the girl's **chemise** and label them (a **chemise** is a linen smock).

Don't forget to draw her cap too.



Look at the list of items in the chamber. Spot the items of furniture which you would not normally have in your bedroom today?

.....

.....

What is a '**Close stool**'?

1. a folding stool
2. a toilet
3. a stool to sit on at the dining table

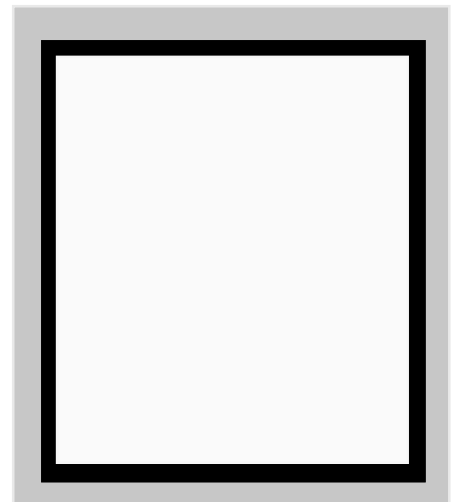
### **Funny Fact!**

Did you know that Tudor and Stuart ladies in England didn't wear knickers ?

On the table in the middle of the room is a copy of a 17th-century mirror. What is it made of?

1. glass
2. steel
3. silver

Imagine you are a person living in the 17th century. Draw your reflection in the 'mirror' opposite.



## Exhibition and other rooms upstairs

Next to the bedchamber you will find this painting of a young woman from about 1570.



What instrument is she playing?

1. a guitar
2. a lute
3. a banjo




Who do you think the old man next to her is?



What am I?.....  
Where can you find me?.....

### Dr. Hall's Medical Rounds

Find the map in the exhibition.  
Where did some of Dr. Hall's patients live?

Q\_in\_on      \_ox\_ey

W\_rc\_s\_er      W\_r\_ic\_

\_u\_l\_w      S\_ut\_am



Look in the medical displays. How would you have caught the plague?

1. From black rats
2. From fleas
3. From people sneezing

For answers ask a guide to show you the finished sheets